

Right First Time Data Capture with Clavis Technology and Talend

Benefits

Partnership provides real-time access to reference data throughout the enterprise from source systems including SAP, Oracle and Terradata.

Prevent data errors at source and in data collection processes to capture data right first time

Validate data before it crosses your firewall

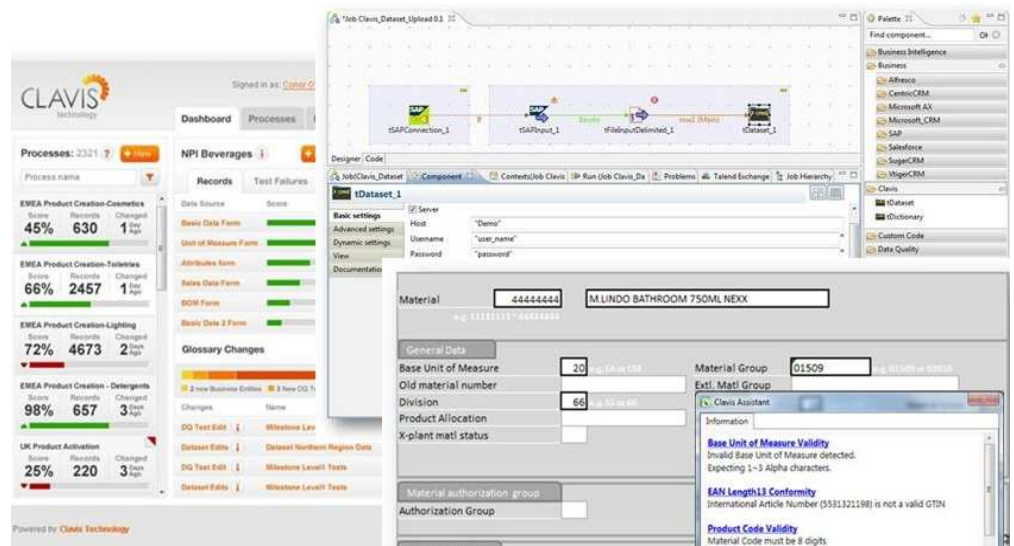
Drive down costs and increase productivity

Data and information are at the heart of a successful organization underpinning day-to-day operations and business decisions. In a world of financial uncertainty, growing competition, more demanding customers and increased regulation, more organizations are looking to data integration and process automation to help drive down costs and increase productivity.

But increasing automation can also increase the risk of bad data entering core business systems causing problems in vital business processes. To be in a position to use data as an asset to decrease business costs and increase agility, organizations need to be confident that it is error-free from the moment it is captured, sourced or created. To achieve this requires real-time validation and monitoring of data at all touch points where data is sourced, whether that is inside or outside the company firewall.

Clavis Technology & Talend

A technology partnership between Talend and Clavis Technology extends the cloud-based data validation and monitoring capabilities of Clavis, by providing access to a wide variety of source systems including SAP, Oracle and Terradata, for retrieving essential reference data, master data and Metadata from across the enterprise. The combined solution enables comprehensive validation of any data at any data capture point.



Clavis Data Capture Validation and Monitoring with Talend Data Integration Suite, delivering Right First Time Data Quality

Clavis Technology

Clavis Technology develops and markets the leading data validation and monitoring solution for data capture, origination and creation processes. The solution is delivered in the "cloud" leveraging the power of the Internet, Software as a Service (SaaS) and cloud computing to prevent data errors from occurring in the first place by applying quality controls at the points where data is first created or sourced.

The solution enables business users to deploy best-in-class data validation and monitoring controls within existing or new data collection processes. It combines the advantages of having a single web portal for data capture, with the ease and convenience of keeping your existing data collection forms, applications and processes.

Clavis consists of:

- Libraries of industry standard data validations and lookups (reference lists) for all common data attributes which can be easily associated with data collection applications, forms and processes, providing real-time data validations, monitoring and assistance to data providers.
- An easy-to-use interface to enable users to build libraries of customized data validations and rules and manage these over time. Clavis' hierarchical library structure enables subject matter experts across all regions and business units to easily create and maintain localized versions of standard data validations. This means that:
 1. Changes to rules or lookups, which exist in multiple data collection forms or applications, are made once and automatically propagated to all forms and applications.
 2. There is no need to release new versions of forms/apps when validations/lookups change as all validation logic is contained within the Clavis Server.
- The ability to manage and maintain reference data to support the population of drop down or selection lists from one central location. Reference data and glossaries can be sent from other applications to Clavis

using Talend Integration Suite custom components.

- Central reporting and monitoring provide a consolidated view of errors across all data collection processes – and tracking of persistent problems. Regular feedback is provided to people responsible for the collection processes, individual subject matter experts or data stewards.
- Clavis is a Software as a Service (SaaS) solution hosted in the cloud – so it doesn't matter whether data collection forms or applications are completed by data providers inside or outside the organization. The solution provides alerts and reports to all data providers to ensure that errors are corrected and that data providers can deliver data to the business that is error-free.

By leveraging Clavis, organizations can enable their business users to setup and manage best-in-class data capture processes leveraging the applications and forms they already use every day.

Talend Data Integration Suite

Talend Integration Suite is a leading data integration product that automates the extraction and movement of data from on-site systems. It provides connectivity to an unmatched range of enterprise applications and databases including SAP, Oracle and Terradata.

Talend Integration Suite is the ideal solution for automating load and update of the wide range of reference data and glossaries used by Clavis for upstream data validation and monitoring. In addition – in cases where users wish to apply batch data to Clavis' rule glossaries and process monitoring templates – Talend Integration Suite enables easy transfer of batch data from any source system to the Clavis portal for validation and analysis.

Clavis Technology and Talend have partnered to develop custom components that facilitate transfer of reference data, master data and Metadata from applications and databases in the enterprise, such as SAP, Oracle and Terradata, to Clavis in the cloud.

The components enable "point and click" set-up of data transfers from any enterprise system and database.

Benefits

Combining the connectivity of Talend Integration Suite with the accessibility of Clavis is helping large organizations to achieve their goals around upstream data capture and creation. Clavis' cloud-based solution ensures that data managers, data stewards, data providers and stakeholders anywhere within an enterprise or beyond the firewall have access to Clavis process-centric data validation and monitoring capabilities, based on centralized glossaries, rules and reference data. Talend Integration Suite connects to key repositories and enterprise applications across the enterprise to ensure that the reference data, master data and Metadata required for monitoring and validating upstream processes is easily loaded and continuously refreshed.

By eliminating defective data at the point of capture organizations know they can trust their data from the start to drive process automation, and to realise the significant benefits of data integration throughout all their operations.

About Clavis Technology

Clavis Technology develops and markets the first cloud-based data validation solution for data capture, origination and creation processes. With Clavis organizations can prevent data problems by getting data 'right first time' and thus eliminate the major costs and losses associated with bad data.

Clavis Technology Contacts:

info@clavistechnology.com
www.clavistechnology.com

USA

345 Park Ave # 1702
New York, NY 10154,
United States
Phone: +1 919-293-1308

Europe, Middle East & Africa

7th Floor, O'Connell Bridge House,
D'olier Street, Dublin 2, Ireland
Phone: +353 1 881 8580