

Clavis Data Steward™: Data Quality Problem Prevention at the True Point of Collection Delivered as Software as a Service

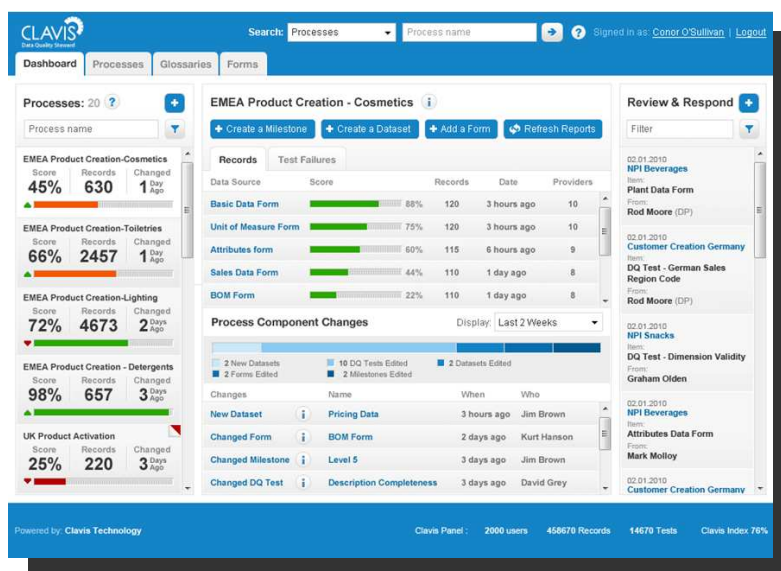
Clavis Quality Steward™ Benefits

- Centrally Managed Data Quality Rules Deployed in Loosely Managed Data Collection Processes
- Works with Existing Data Collection Processes; Such as Those Based on Spreadsheets, Databases and Forms
- Pre-emptive Data Quality: Delivers Sustainable Improvement
- SaaS Delivery Model Means Rapid and Universal Deployment
- Scales to Meet Needs, Where and When it's Needed
- Predictable Subscription-based Pricing

Organizations of all sizes recognize the importance and value of having high quality, trusted data in their business systems. Many have invested heavily in technology and processes designed to mitigate Data Quality issues. However, most of today's Data Quality solutions are designed to 'inspect and correct' data long after it has been created, which only addresses the symptoms of the problem. Ultimately there is no replacement for capturing the right data in the first place, by applying Data Quality rules as data is created or sourced.

Clavis Data Steward is a unique Data Quality problem prevention solution delivered in the "cloud" as Software as a Service (SaaS). The on-demand solution enables organizations to get their data 'right first time' at the true point of capture and thus reap the benefits of high quality throughout the enterprise from the start and for longer.

Once incorrect data gets into your information systems it becomes difficult and costly to rectify. In its report, "Data Quality and the Bottom Line: Achieving Business Success through a Commitment to High Quality Data", The Data Warehouse Institute (TDWI) said that poor quality data cost US businesses more than \$600 billion a year. Clavis leverages the power of the internet, SaaS and cloud computing to prevent Data Quality problems from occurring in the first place, by applying centrally managed validation and monitoring at loosely-governed data collection points – such as in desktop spreadsheets, databases, and forms – where data is first created.



Clavis Data Steward: SaaS Data Quality at the True Point of Data Capture

Right First Time Data Quality

Collecting clean, accurate and timely data presents a number of significant challenges for large organizations, not least of which is that data collection is often a widely dispersed activity, involving people from both inside and outside the organization. It involves many different forms, applications, processes and standards. As such data collection is notoriously difficult to control and govern in terms of data quality standards and rules

Clavis Data Steward is a unique Data Quality solution designed to tackle data quality, when and where data is first collected, by empowering all data providers to get your data right first time – even before it is entered into core applications such as Oracle or SAP.

The SaaS solution is easily integrated with upstream data capture forms and applications (such as those built using Microsoft Word, Microsoft Excel, web forms, rich Internet applications or Adobe LiveCycle) as well as core enterprise applications from SAP to Salesforce.com.

It supports business processes including customer on-boarding, new product introduction and trading partner data preparation/validation, among others, to ensure your organization's key business data complies with internal and external standards from the start. And because Clavis Data Steward is available in the cloud your Data Quality rules are available to be deployed wherever and whenever data is collected; whether that is within your organization, or by you trading partners, suppliers or customers.

Lasting Data Quality Starts with Problem Prevention

Experience to date, based on prior Data Quality approaches, has confirmed that problem prevention is the only practical approach to eliminating poor Data Quality as a barrier to business. Clavis Data Steward enables organizations to identify and remove the causes of poor Data Quality thus ensuring that data is 'right first time, every time'. The benefits gained from applying Data Quality controls at the true point of collection, or as close to the source as possible, are far reaching and go beyond those of having a high standard of Data Quality alone.

With Clavis you can ensure that all the different forms and applications used in your data collection processes have a unified standard in terms of Data Quality, wherever they are. The solution enables business users to centrally manage data quality rules and deploy the relevant data validation and monitoring services, based on simple web calls to the Clavis platform. The validation services provide relevant and helpful guidance to data providers as they enter data into forms and applications.

Trading Partner Data Validation

Data Quality is always important, but when it comes to collaboration between trading partners the quality of the data takes on an even greater significance, as the exchange of high quality data between trading partners is the foundation stone of business-to-business eCommerce.

Suppliers such as consumer goods manufacturers for example need to ensure that data conforms to their customers' requirements and formats. But despite the existence of standards such as those

provided by GS1 there continues to be a large degree of variation in the data required by different suppliers, partners and customers.

At the same time supplier organizations no longer control the origination of all of the data that is in key business systems. Clavis Data Steward is the first data quality solution that enables companies to deploy the centralized data quality rules and controls in all data collection processes even when those processes are initiated by trading partners or customers. It also offers an intuitive, flexible and easy to manage way for organizations to allow for the variation in requirements by validating data against the appropriate and relevant data rules at the point of collection based on use-case and context.

Clavis Data Steward Features

Clavis Data Steward is the ultimate platform for managing Data Quality rules and reference data, and deploying the rules when and where they are needed in any organization. The SaaS solution uses simple but flexible interfaces and 'light-touch' integration so it can be easily deployed with minimal investment in IT resources.

With modules for Organization, Glossary Management, Reporting & Process Management and Data Management Clavis Data Steward enables business stakeholders to apply the relevant Data Quality business rules or controls at the appropriate time in each process supporting existing data collection, Data Quality and Data Governance programs and providing an easily accessible solution for cross-enterprise and inter-trading-partner Data Quality assurance.

SaaS: Delivered in the cloud:

Clavis is the first independent software vendor with its sole focus on delivering its Data Quality solutions as a SaaS offering. So-called cloud computing and SaaS are changing the way businesses and government organizations use information technology. SaaS removes the need for end-customers to install and manage their own software solutions and requires limited or no operational support from a company's IT organization. It means Clavis Data Steward can be deployed anywhere data is collected. It is easy to configure and maintain, accelerates time-to-results, and provides an affordable, predictable, and scalable subscription-based pricing model. This enables more organizations to reap the significant benefits of good Data Quality with an easy-to-use, easily integrated, universally accessible solution.

Data Quality Organization:

Clavis' Data Quality Organization module assigns ownership and accountability for Data Quality activities and goals to business managers across the organization. Multiple individuals (or teams) in different parts of the organization are mapped to one of the four Data Quality roles.

- Business Process Manager
- Data Quality Steward
- Data Provider
- Stakeholder

The product enables each of the roles to clearly see when and where defects were introduced and where processes are defective, and empowers the right individuals to effect real change to improve data processes and prevent ongoing errors.

Data Quality Glossary: The Data Quality Glossary provides hierarchical libraries of standard Data Quality tests and controls for use within the enterprise and by business partners. The Glossary is designed for effective management, reuse and governance of large numbers of Data Quality tests by data stewards, wherever they are located. The approach facilitates collaboration and standardization in the development of Data Quality tests and controls.

Dashboards, Alerts & Process

Manager: Monitoring and oversight are very important in the drive to maintain data quality improvement over time. Clavis Data Steward's dashboards provide data managers, data stewards and data providers with a high level view of the data collection process based on their role. They include dynamic real-time reporting and alerts to inform key stakeholders and to facilitate prompt resolution of issues.

The Process Manager module enables users to develop Data Quality Governance models for their core business processes. Users define the key milestones and owners for each business process. Data Quality tests and controls are then configured for each process milestone. Process owners or stakeholders are made accountable for compliance with the Data Quality controls. By monitoring Data Quality pass/fail rates at each of the process milestones, Data Quality problems can be quickly identified and corrected. In addition process weak points can be identified and removed or altered.

Data Management &

Integration: Clavis Data Steward enables users to define the sources and formats of data to be processed. It works with raw master data and results data passed from other Data Quality tools. Data Quality tests or controls provide real-time feedback to users as they enter data in forms and Internet applications. Integration is simple; based on generic HTTP commands so business users can leverage Clavis Data Quality controls in web forms, Excel spreadsheets and PDF documents with no technical input.

Conclusion

The data collection process in most large organizations is complex. It typically involves personnel from across the organization – and often from outside the organization – and is dependent on many processes, policies, and procedures each devised to achieve its own specific goals.

Given the complexity of the data creation process, implementing stringent Data Quality standards at source has proved difficult in many organizations. Clavis Data Steward changes all that. Mindful of the success that proactive quality control and management spawned in manufacturing organizations, Clavis Data Steward takes the same upfront and process driven approach to Data Quality.

The solution enables organizations to address the root causes of Data Quality defects by focusing on data collection and creation processes, and by empowering key stakeholders – data providers, business process owners and downstream consumers of the data – to effect real change that sustainably delivers high quality data to the business.

Clavis Technology Contacts:

info@clavistechnology.com
www.clavistechnology.com

USA

345 Park Ave # 1702
New York, NY 10154
United States
Phone: +1 919-293-1308

Europe, Middle East & Africa

7th Floor, O'Connell Bridge
House
D'olier Street, Dublin 2
Ireland
Phone: +353 1 881 8580

Clavis Data Steward™ in Action

Project

Large manufacturer deploys Clavis Data Steward™ for new product introduction and customer 'on-boarding' processes.

Challenge

Business users around the organization provide data on new products and customers via Microsoft Excel forms and Word documents leading to disjointed data collection processes that are difficult to oversee and manage. As a result data administration teams are required to review and correct data before it can be entered into SAP to setup the new customer or product master data. This review process is time consuming and is itself prone to error.

Solution

By deploying Clavis Data Steward the organization is able to enforce business rules and Data Quality tests as data is entered into Excel forms and Word documents. Data providers are assisted to get the data right first time and management stakeholders are given a comprehensive overview enabling them to identify Data Quality bottlenecks across all data collection processes.

Benefits

Significant reductions in time required for review/correction/re-entry of data. In addition, by applying more Data Quality tests earlier on in the data collection processes and providing a solution for auditing the processes, the organization was able to counteract a drop in Data Quality that was experienced when SAP master record creation processes were outsourced to an external company.

About Clavis Technology

Clavis Technology develops and markets Clavis Data Steward™ the first cloud-based pre-emptive data quality and data quality governance solution. With Clavis organizations can focus on preventing data errors by getting data 'right first time' to eliminate the major costs and losses associated with bad data in their core IT and Master Data Management systems. Provided online as Software as a Service the data validation and monitoring solution is easy to use, easy to integrate and universally accessible. It accelerates time-to-results, and offers an affordable, predictable, and scalable subscription-based pricing model to enable more organizations to reap the benefits of data which is "right first time" at point of capture.